

SURFACE MOUNT ALUMINUM ELECTROLYTIC CAPACITORS



CF

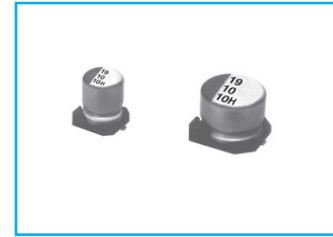
Chip type, High Temperature, Long Life, Series



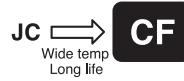
Long Life



Solvent Proof



- Chip type, high temperature range, for + 130°C use
- For ECU
- Application to automatic insertion machine using carrier
- Complied to the RoHS directive

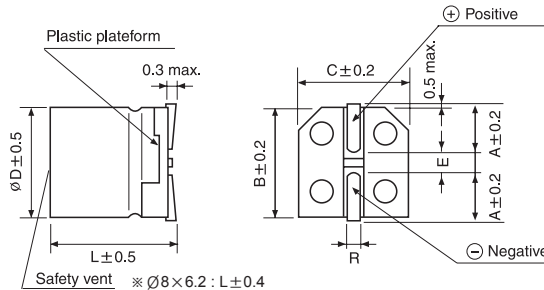
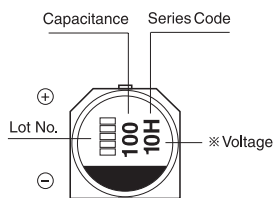


Item	Characteristics					
Operating temperature range	-40 ~ +130°C					
Leakage current	I = 0.03CV or 4μA whichever is greater (after 2 minutes)					
Capacitance tolerance	±20% (20°C, 120Hz)					
Dissipation factor max. (at 120Hz, 20°C)	Rated Voltage(V)	10	16	25	35	50
	tanδ	0.32	0.24	0.21	0.18	0.18
Low temperature characteristics (Impedance ratio at 120Hz)	WV	10	16	25	35	50
	Z-40°C/Z+20°C	12	11	8	6	6
Load life (after application of the rated voltage for 5000 hours at 130°C)	Leakage current	Less than specified value				
	Capacitance change	Within ±30% of initial value				
	tanδ	Less than 300% of the specified value				
∅8×6.2 : 2000 hours, ∅8×10 : 3000 hours, ∅10~ : 5000 hours						
Shelf life (at 130°C)	After 1000 hours no load test, leakage current, capacitance and tanδ are same as load life value.					
Resistance to soldering heat	The following specifications shall be satisfied when the capacitors are restored to 20°C after exposing them at 250°C for 30 seconds.					
	Leakage current	Less than specified value				
	Capacitance change	Within ±10% of initial value				
	tanδ	Less than specified value				

DRAWING

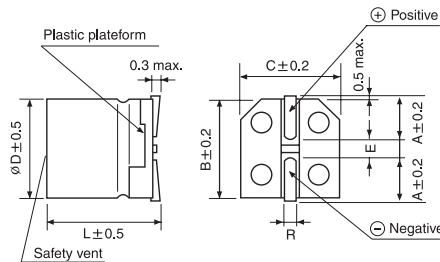
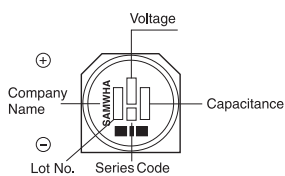
Unit : mm

(∅8×6.2, ∅8×10, ∅10×10)



∅D	A	B	C	E	R
8×6.2	3.3	8.3	8.3	2.3	0.5~0.8
8×10	2.9	8.3	8.3	8.3	0.8~1.1
10×10	3.2	10.3	10.3	4.5	0.8~1.1
12.5×13.5	4.6	12.8	12.8	4.5	1.1~1.4

(∅12.5×13.5)



DIMENSIONS & MAXIMUM PERMISSIBLE RIPPLE CURRENT

μF	WV	10		16		25		35		50	
22										8×6.2	28
33								8×6.2	41	8×10	75
47								10×10	90	10×10	90
68				8×6.2	50	8×6.2	45	10×10	105	12.5×13.5	132
100	8×6.2	48	8×10	66	10×10	163	10×10	132	12.5×13.5	167	
220	8×10	90	10×10	163	10×10	200	12.5×13.5	249			
330	10×10	125	10×10	200	12.5×13.5	304					
470	10×10	150	12.5×13.5	304							
1000	12.5×13.5	405									

Ripple current (mA rms) at 130°C, 120Hz
Case size ∅D×L(mm)